

# COLLECTIVE IDENTITY (SHILS)

EU – union of nation states, and European citizens (two sources of legitimacy)

What is NATION/VOLK/THE PEOPLE?

Collective (national) X Individual (personal) Identity

Nationalism; National Interests, welfare; National Enemies etc.  
(?)

Variety of meanings, multicultural competence

Primordial, Sacred (ethnic/cultural), Civil (political)

Border Perspective: Im/Permeability

Various Integrational/Absorption Capacity

Case of Immigrants Quota (?)

# EUROPEAN IDENTITY (DELANTY)

Historical perspective

Europeanness as (Western) Christendom

Constitutive others/outside - role of Islam & Orthodoxy

Significance of Crusades/Crusaders, Constantinople seized (1453)

1492 (New World) – colonization & the end of Reconquista

Double schism (Roman x Orthodoxy; Catholics x Protestants)

Religious war, Victory of Protestantism

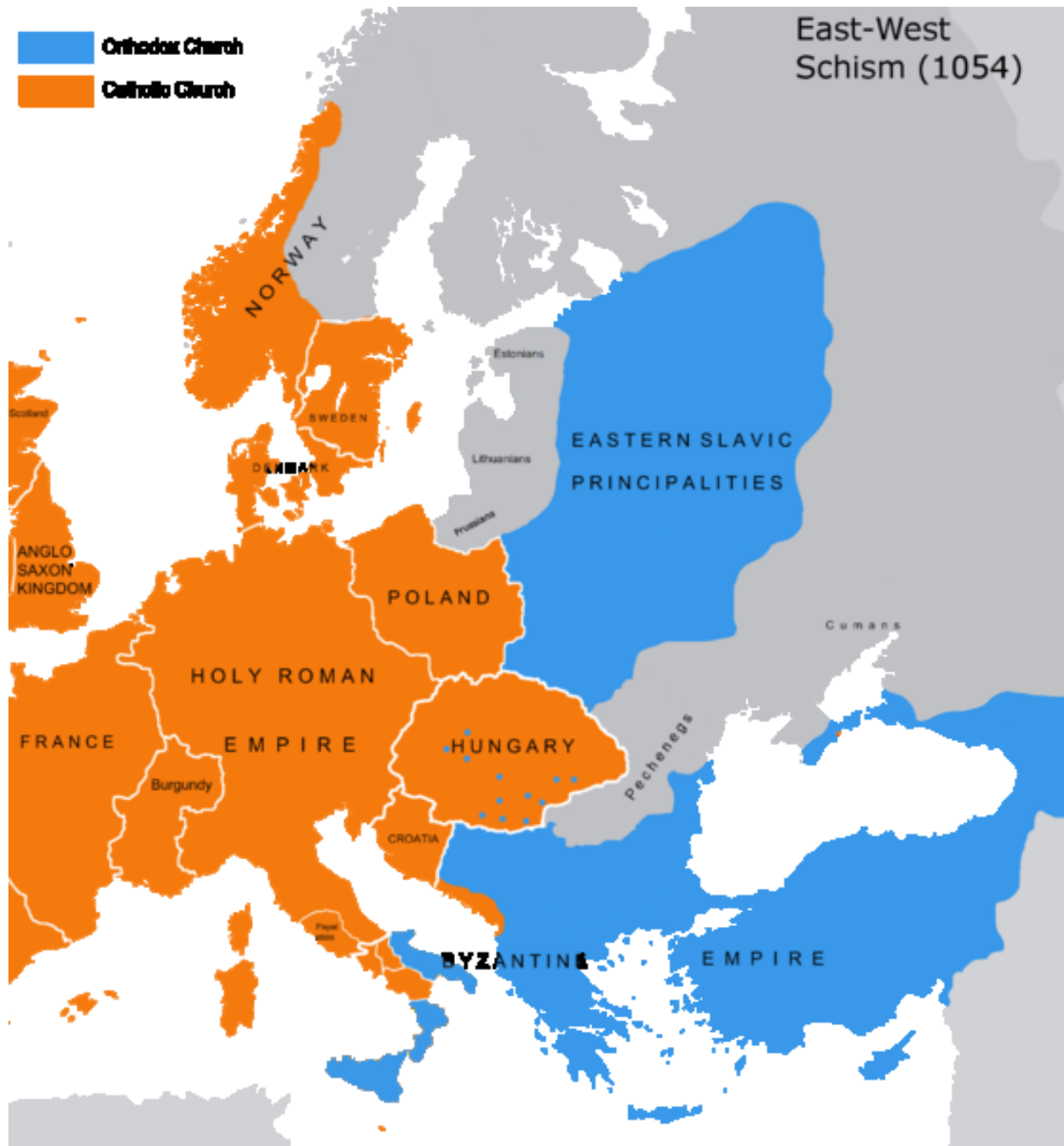
Peace of Westphalia (1648)





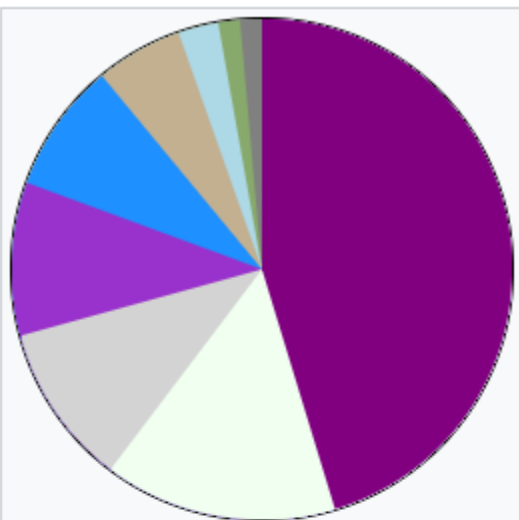
■ Extent of Christianity about 600 (pontificate of Gregory I, the Great, 590 - 604)  
 ■ Area Christianized 600 - 800  
 ■ " " 800 - 1100  
 ■ " " 1100 - 1300  
 ■ Damasus Churches of the apostolic period (33-100)





# RELIGIONS IN



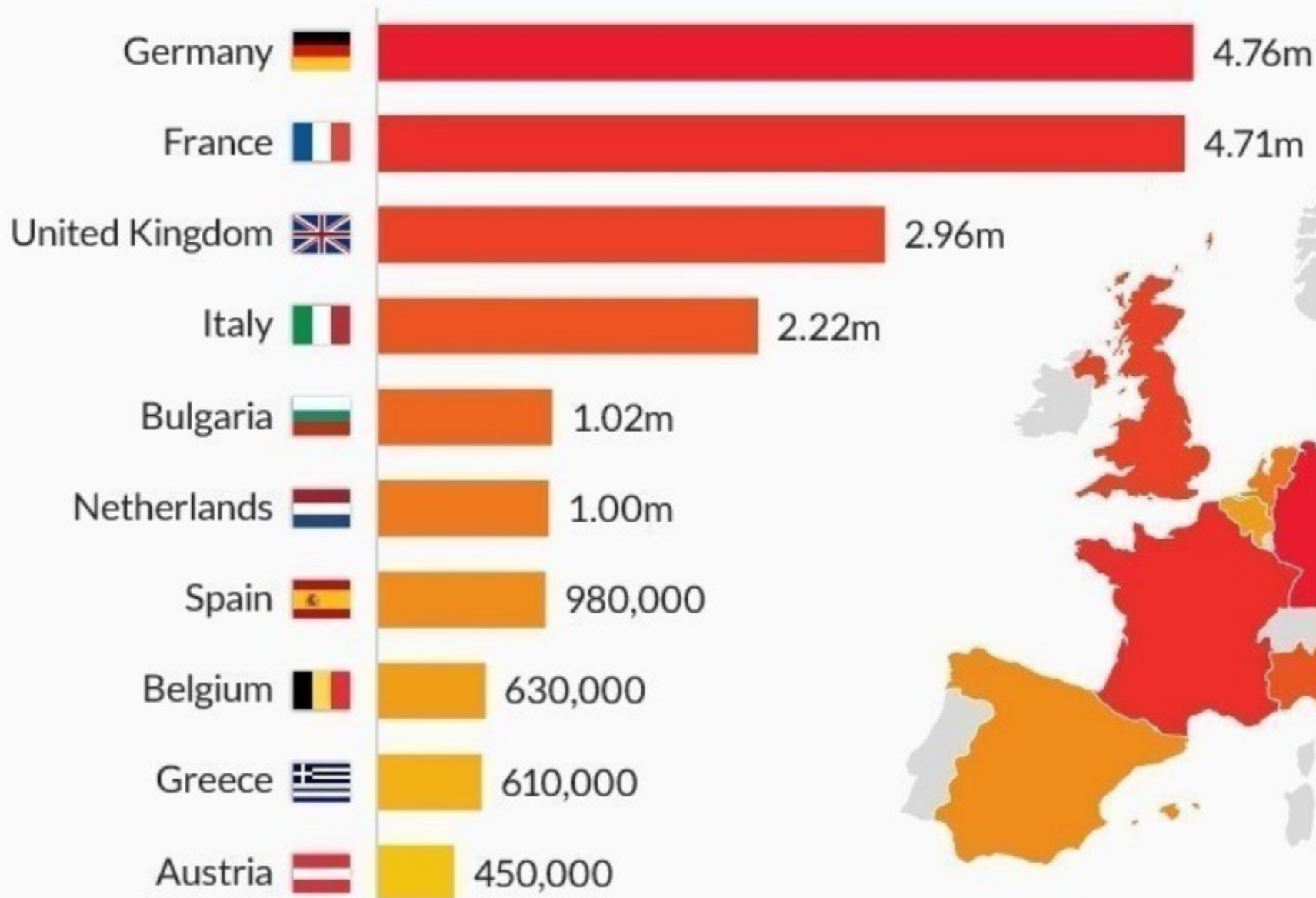


Religion in the European Union (2021)<sup>[1]</sup>



# Europe's largest Muslim populations

The 10 countries with the largest Muslim populations in the EU



# Muslims Population in Europe





# Most Countries Overestimate Their Muslim Population

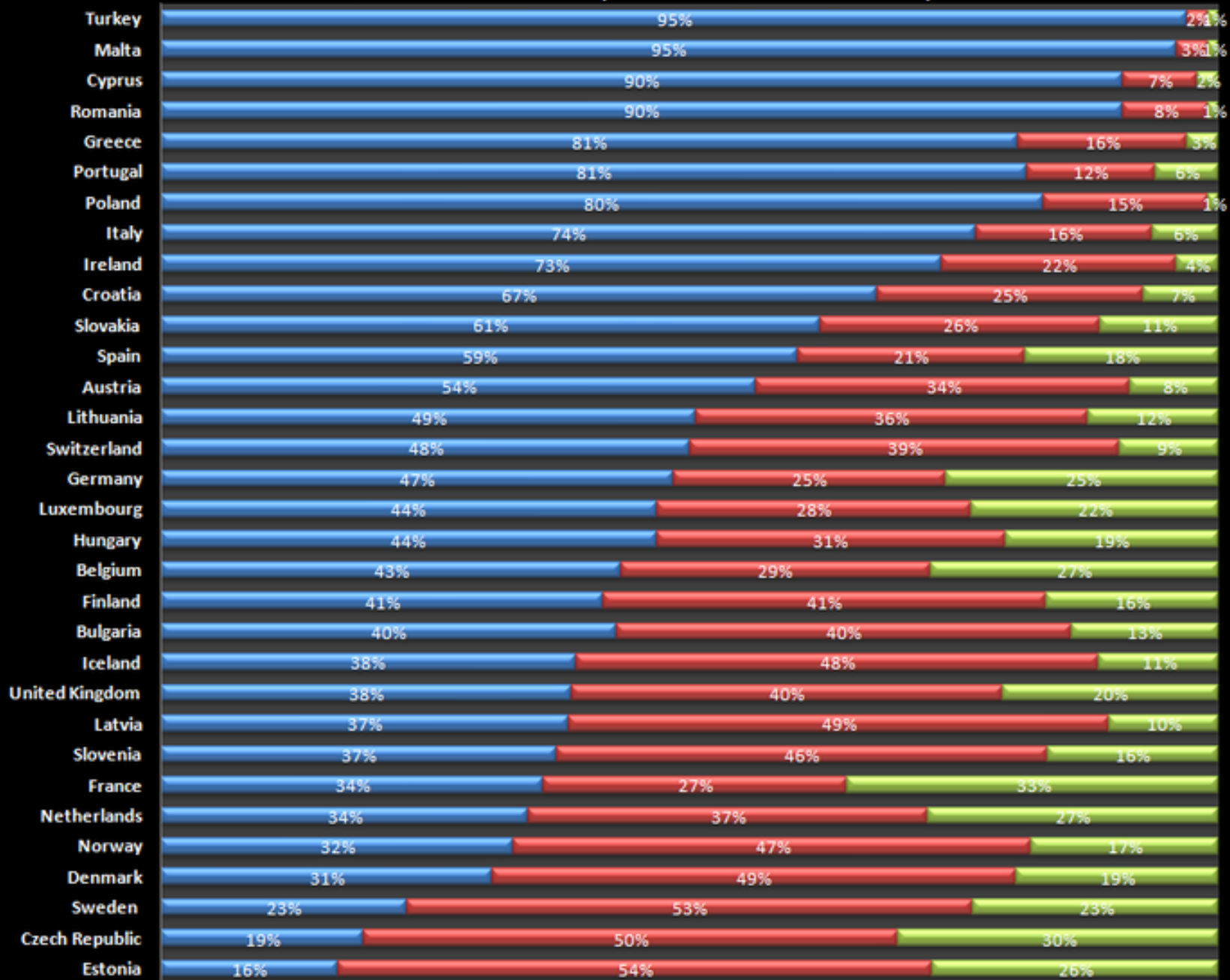
"Out of every 100 people in your country, how many do you think are Muslim?"



@StatistaCharts Source: Ipsos MORI

# Eurobarometer Poll 2005

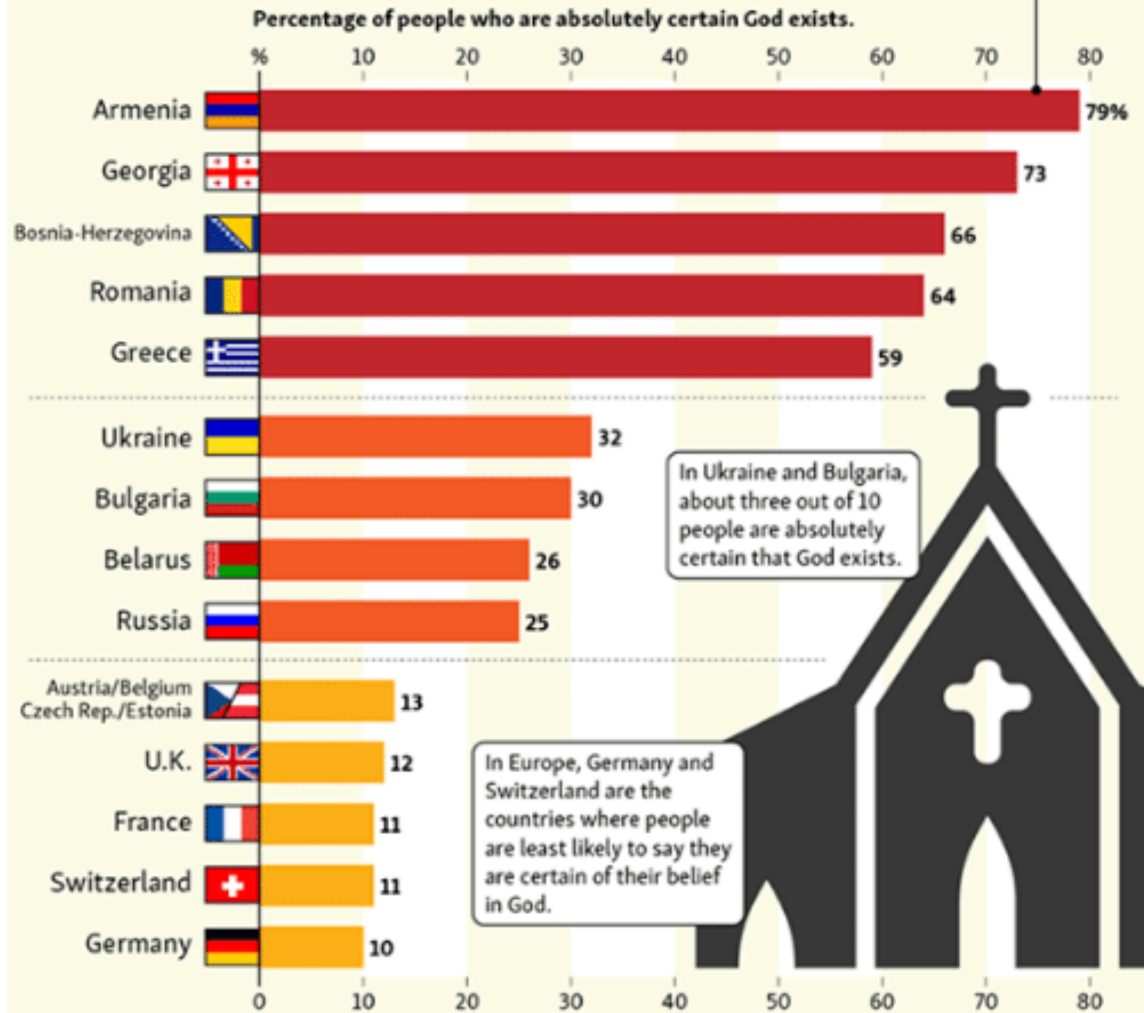
■ Belief in God ■ Belief in spirit or force ■ No belief in God or spirit



# Who (Really) Believes In God

In Europe, Armenia and Georgia are the countries where most people are certain about their belief in God.

Almost eight out of 10 Armenians are absolutely certain that God exists.



In Ukraine and Bulgaria, about three out of 10 people are absolutely certain that God exists.

In Europe, Germany and Switzerland are the countries where people are least likely to say they are certain of their belief in God.

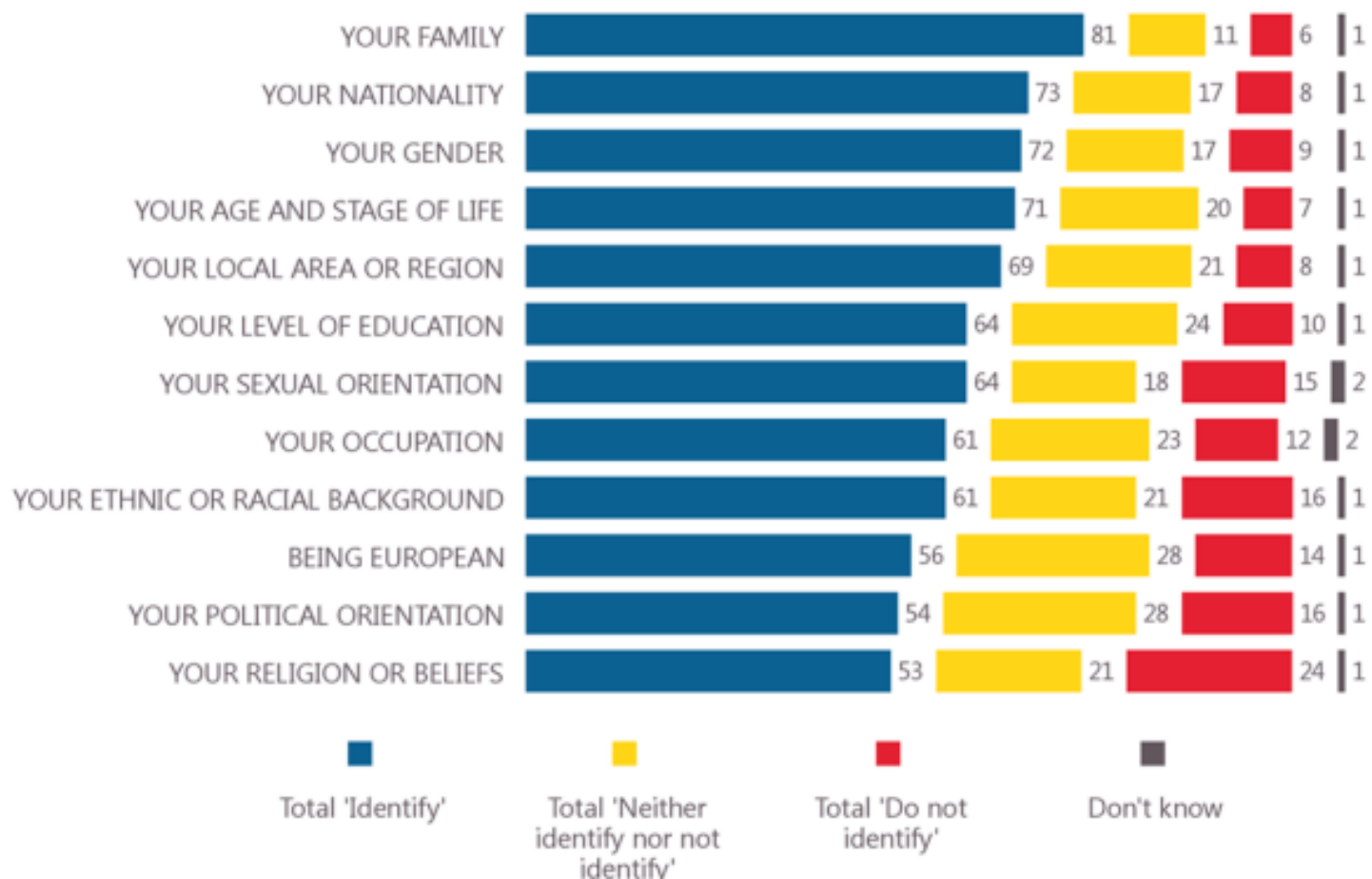




## Europeans first and foremost identify with their family.

When it comes to Europeans' identity, family ranks highest, with 81% of respondents indicating that they identify with it. Second and third are nationality and gender with 73% and 72% of respondents saying they identify with these respectively. The list bottoms out with 'being European' (56%), 'political orientation' (54%), and 'religion or beliefs' (53%).

**QC4** In general, how much do you identify yourself with each of the following? Please answer using a scale from "0" to "10", where "0" means "not at all" and "10" means "a lot".  
(% - EU27)

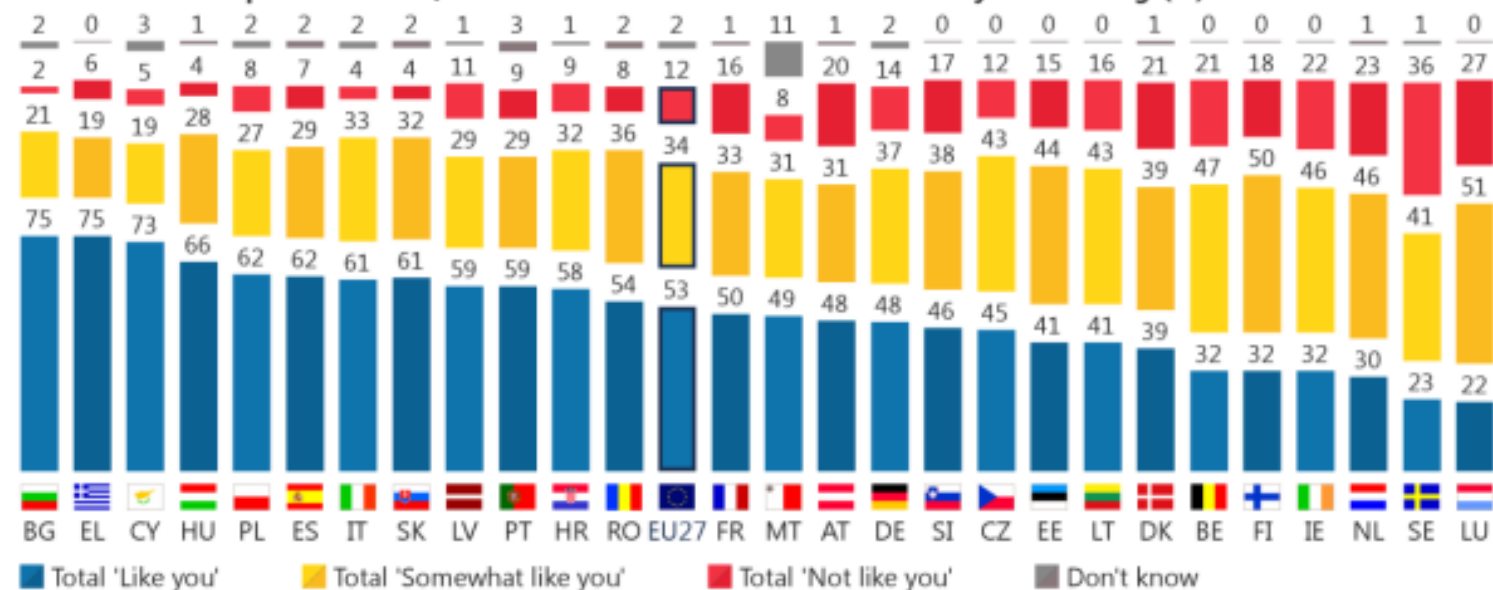


### Slightly more than half of EU citizens value tradition

53% of EU respondents indicate that it is “like them” to place importance on **the value of tradition**. 34% are likely to indicate it is “like them” to some extent. An average of 12% of EU respondents maintain it is not like them.

**QC2ab.10** Now we will briefly describe some different people. Using a scale from 1 to 6, please tell me how much these people are or are not like you. '1' means a person is "not like you at all" and "6" means this person is "very much like you".

**It is important to him/her to maintain traditional values and ways of thinking (%)**



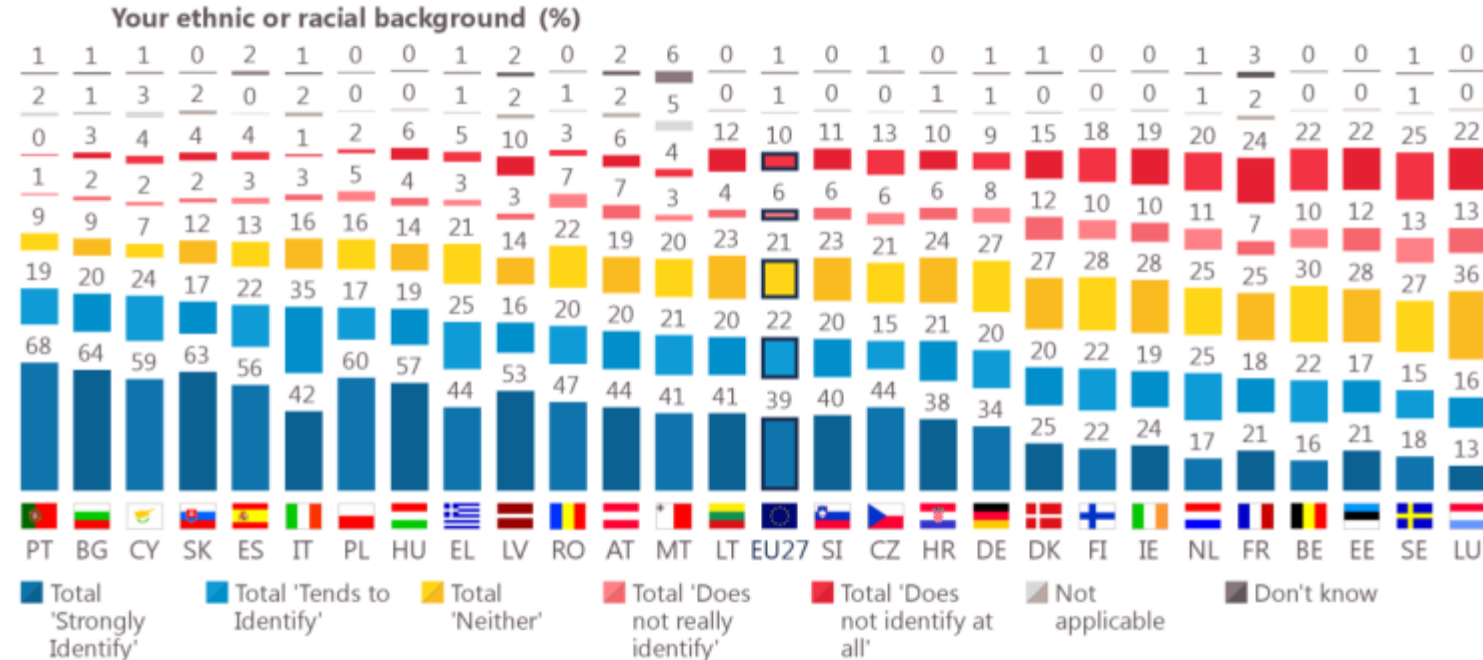
## 2 Identity related to ethnic or racial background

### Six in ten EU citizens identify with their ethnic or racial background.

Across the EU, 61% of respondents say they identify with their ethnic or racial background, 21% are noncommittal, while 16% say they do not identify with their ethnic or racial background.

Between the different Member States, some differences can be noted. More than eight in ten respondents in Portugal (87%), Bulgaria (84%), Cyprus (83%) and Slovakia (80%) say they identify with their ethnic or racial background. On the contrary, less than four in ten respondents say they identify with their ethnic or racial background in Luxembourg (29%), Sweden (33%), Estonia and Belgium (both 38%) and France (39%).

QC4.2 In general, how much do you identify yourself with each of the following? Please answer using a scale from "0" to "10", where "0" means "not at all" and "10" means "a lot".





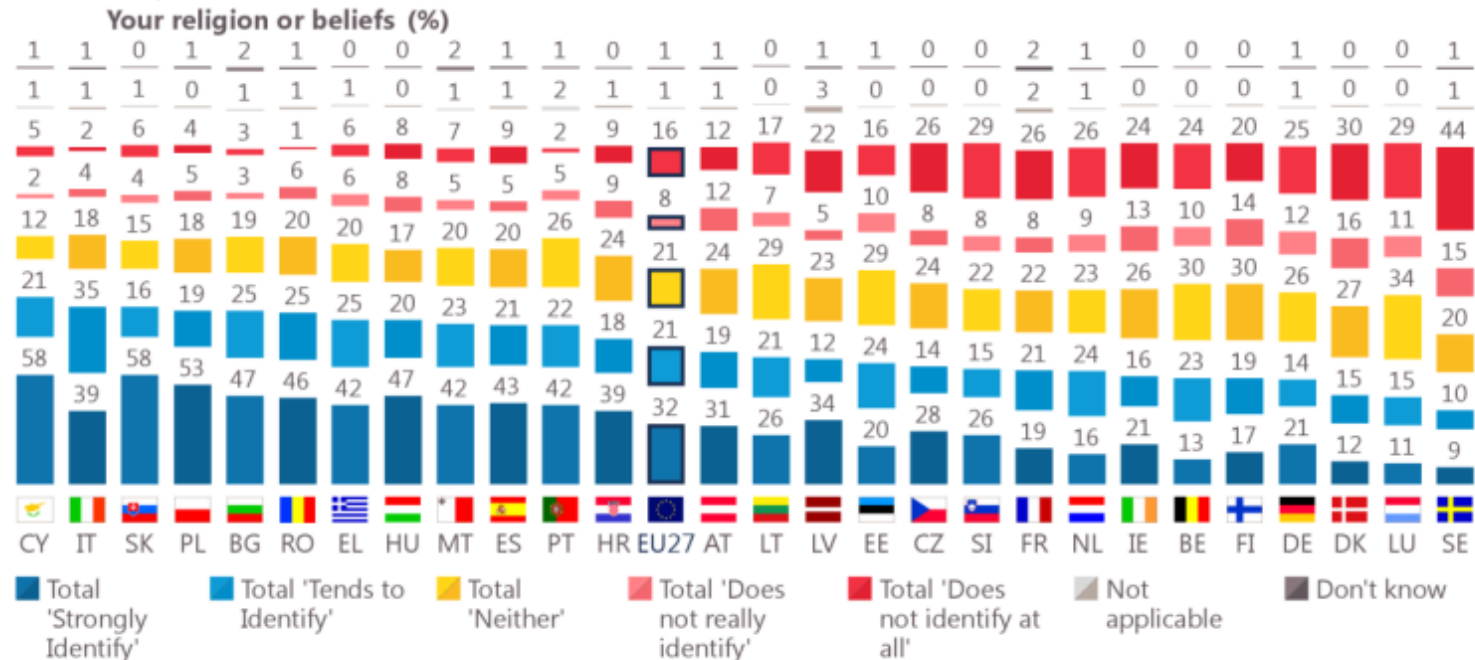
## 7 Identity related to religion

### Around half of EU citizens identify with their religion.

On average, 53% of EU citizens are likely to identify with their religion or beliefs, 21% neither identify nor do not identify with their religion, and 24% do not identify with this aspect. Respondents are least likely to identify with their religion or beliefs out of all proposed items.

Considerable differences can be found among EU Member States. More than seven in ten respondents in Cyprus (79%), Italy and Slovakia (both 74%), Bulgaria and Poland (both 72%), Romania (71%) identify with their religion or beliefs. Respondents in Sweden (19%), Luxembourg (26%), Denmark (27%), Germany (35%), Finland and Belgium (both 36%), and Ireland (37%) are least likely to identify with their religion or beliefs.

**QC4.3** In general, how much do you identify yourself with each of the following? Please answer using a scale from "0" to "10", where "0" means "not at all" and "10" means "a lot".



SOURCE: EB, SPRING 2019

		Culture	History	Economy	Values	Sports	The rule of law	Geography	Education	Inventions, science and tech	Solidarity with poorer re	Languages	Healthcare and pensio	Religion
EU28		28	24	22	22	20	19	19	17	13	13	12	10	8
BE		27	27	25	27	21	16	14	18	14	14	16	16	9
BG		23	25	17	26	9	11	32	10	12	12	7	8	11
CZ		31	32	15	26	21	14	14	10	17	13	13	13	7
DK		31	30	20	28	29	19	21	23	15	14	12	8	3
DE		30	21	22	23	20	31	12	20	13	16	12	6	8
EE		28	17	24	24	14	14	18	17	13	7	10	6	6
IE		32	22	26	21	31	13	13	25	12	14	15	12	7
EL		38	26	30	21	21	10	25	15	24	10	12	4	13
ES		25	22	26	19	17	18	18	17	6	12	8	11	3
FR		28	31	17	22	26	14	21	18	12	15	15	10	9
HR		24	18	29	14	26	19	18	17	16	17	9	11	10
IT		26	23	23	17	15	16	21	13	15	11	10	8	8
CY		40	10	27	21	18	17	8	25	12	13	11	8	14
LV		27	16	22	12	23	8	30	21	13	7	15	8	7
LT		31	19	25	19	25	8	24	13	23	9	12	7	10
LU		30	31	21	31	18	15	15	22	4	8	24	7	6
HU		28	31	23	15	17	12	20	13	13	14	14	16	15
MT		32	19	15	20	17	32	16	18	13	12	19	10	5
NL		25	31	33	24	24	20	38	9	19	15	9	7	4
AT		31	26	22	31	15	19	23	21	16	12	17	10	14
PL		21	19	30	23	13	17	17	15	13	13	13	13	9
PT		35	21	17	21	14	15	25	13	11	16	14	6	4
RO		20	16	16	14	21	18	16	19	15	19	12	16	14
SI		25	23	31	16	35	11	18	20	13	8	12	8	10
SK		24	26	17	16	13	13	29	15	11	11	13	15	12
FI		24	25	23	34	14	33	24	22	16	13	9	12	6
SE		31	32	16	31	15	25	30	22	16	16	7	7	4
UK		30	22	16	22	25	19	12	23	13	8	14	12	9

1st MOST FREQUENTLY MENTIONED ITEM

2nd MOST FREQUENTLY MENTIONED ITEM

3rd MOST FREQUENTLY MENTIONED ITEM